



University of Sunderland

Role profile

Job title:

Associate Professor (Learning and Teaching)

Department:

Faculty of Business and Technology

Location:

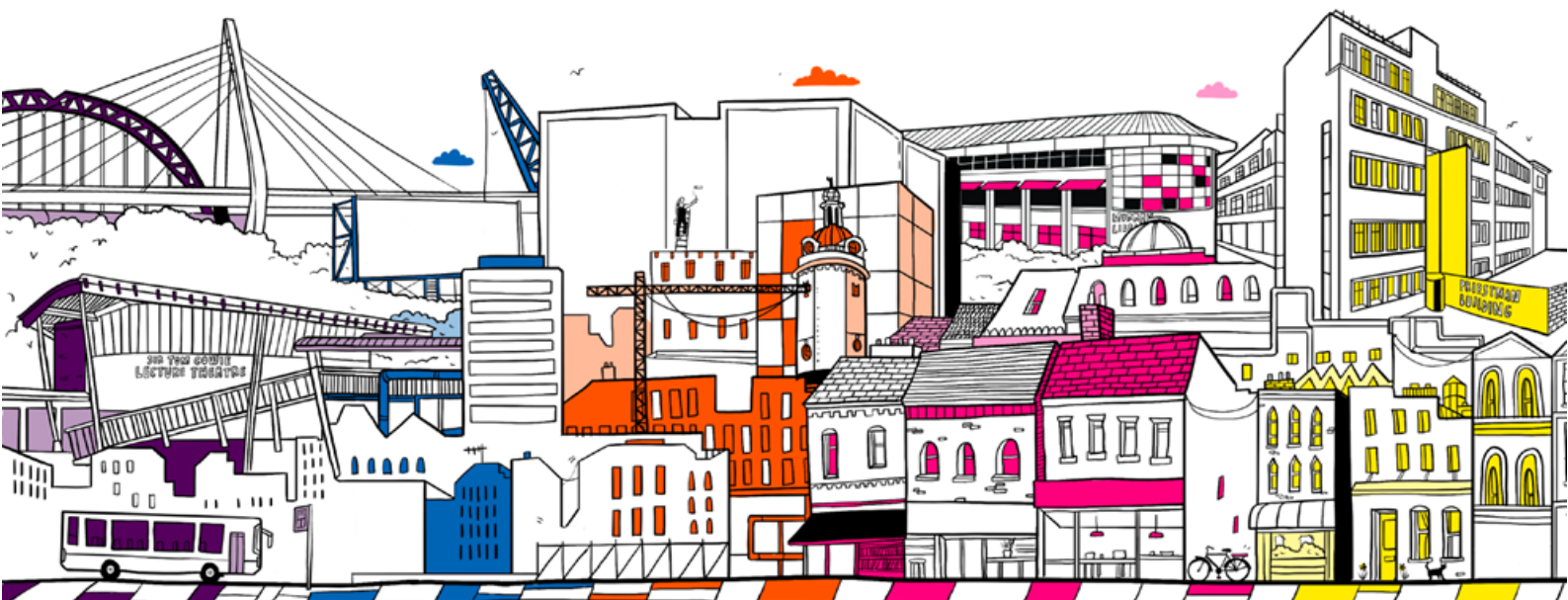
Sunderland campuses

Reports to:

Head of Academic Department

Working hours:

37 hours per week



The role:

As Associate Professor (Learning and Teaching) you will make a substantial contribution to the aims of the University, as presented in the University Strategic Plan, through the enhancement of the University's public reputation as a centre for academic excellence. You will undertake a full and active role in the life of the University, enhancing its public reputation as a centre of research, enterprise and innovation and learning and teaching, providing effective academic leadership through the close co-operation with academic colleagues both internal and external.

The responsibilities:

- Secure funding from bodies such as UKRI, charitable foundations, commercial enterprises, government, and other sponsors.
- Provide academic leadership by collaborating with colleagues within and beyond the University.
- Support colleagues' academic development through joint projects and expert advice.
- Supervise postgraduate research students.
- Demonstrate professional esteem through activities like chairing networks, journal editing, peer review, or keynote presentations.
- Contribute to University, Faculty, or school governance and academic development.
- Represent the University and expertise area in the media and on regionally or nationally recognized bodies.
- Support the University's development through institutional citizenship and promoting academic success.
- Deliver high-standard teaching to undergraduate and postgraduate students.
- Undertake additional duties as directed by the Faculty Pro Vice-Chancellor or Deputy Vice-Chancellor Academic.

The benefits:

At The University of Sunderland, we are committed to creating a work environment where you can truly thrive. We recognise that our success is built on the dedication and talent of our people, which is why we have developed a benefits package designed to support you in every aspect of your life.

From generous annual leave and enhanced pay for important life events like maternity, paternity, or adoption, to flexible work options that help you balance life's demands, we've got you covered. Our benefits also include access to our award-winning staff support networks, confidential employee assistance, discounts on major retail brands, leisure activities, travel to work, and more.

At Sunderland, we're not just offering a job, we're offering a place where you can grow, connect, and feel truly valued.

Who we're looking for

Your qualifications include:

- An honours degree in a related discipline.
- A proven record of significant contribution to the aims of the University as presented in the University Strategic Plan and a demonstrable ability to enhance the University's public reputation as a centre for teaching excellence.
- A Doctorate in a relevant field or close to completion.
- Active membership of professional relevant bodies (*desirable*).

Significant measurable achievements in the following criteria:

- Made significant contributions to the development of student learning experiences and pedagogic practice, whether by the design or deliver of programmes.

Your experience includes:

Learning and Teaching Leadership

- A sustained track record of outstanding teaching, informed by disciplinary expertise and pedagogical innovation.
- Evidence of successfully leading colleagues in pedagogic enhancement and/or curriculum development activities with impact on the student experience and outcomes.
- Effective design, management and delivery of a learning and teaching project.
- A significant contribution to teaching and learning through activities such as participation in higher education groups, dissemination or quality enhancement.
- Successful knowledge transfer to taught programmes and student learning from external engagement.
- Success in securing external funding for projects that enhance learning, teaching and/or the student experience.
- Proven record of doctoral supervision (*desirable*).
- Successful development of, and recruitment to, a new taught programme (*desirable*).

Professional Esteem

- National recognition demonstrated through publication and/or other dissemination activities and outputs.
- Raising the profile of the University through significant public or media events.
- A sustained record of productive involvement in translating pedagogic research into beneficial activity or positive change in the wider community.
- Evidence of peer-reviewed pedagogical research from either a higher education or disciplinary perspective (*desirable*).
- Collaborating with external partners in the development and delivery of learning and teaching projects (*desirable*).



What we're looking for

Your expertise includes:

- Stimulates new knowledge, integrates multiple perspectives, and drives innovative research agendas while ensuring the integrity and vibrancy of the discipline.
- Fosters research integrity, and mentor's postgraduate researchers and early-career academics.
- Encourages and supports innovative cross-disciplinary research and partnerships.
- Designs impactful projects, stimulates intellectual discourse, and challenges traditional paradigms with evidence-based approaches.
- Anticipates future trends, connects diverse ideas, and pioneers breakthrough research with strategic impact.
- Shapes institutional and sector-wide research policies, promoting excellence in higher education.
- Recognized as an authority in their field, contributing to societal and academic advancements on an international scale.
- Builds influential connections across academia and non-academic organizations to drive societal impact.
- Leads high-quality teaching programmes that integrate cutting-edge research.
- Develops evaluation frameworks to assess and improve research outcomes and institutional success.



Culture Framework:

Our [Culture Framework](#) presents the way we do things at the University of Sunderland. It is a living document of our culture. It supports how we apply ourselves at work and it helps with our approach to making decisions and working with each other. It is woven into all our people policies and procedures, supporting how colleagues are managed, recognised, and developed. Our values are our shared principles as an institution. We undertake actions to make them come to life. If you decide that a career with us is perfect for you, then these principles will lead and motivate your work every single day.

INCLUSIVE

We celebrate our diverse culture where everyone's contribution is welcomed and valued.

What leaders do:

RESPECTFUL - Create team environments where it feels safe to ask questions, share views, & challenge non-inclusive situations.

AUTHENTIC - Are consistent & transparent with how colleagues are led & motivated.

DIVERSITY CHAMPIONS - Ensure a diverse range of people are involved with making decisions or generating ideas.



INSPIRING

We will provide an inspiring, enterprising, and empowering experience for our students and staff.

What leaders do:

ENTHUSIASTIC - Bring clarity on the vision/purpose of the University & translate that message so teams understand their contribution.

ENCOURAGING - Trust & empower others to grow, giving praise and constructive feedback.

LIFE-LONG LEARNERS - Support others to develop, working with them to seek opportunities to learn.



INNOVATIVE

We value people for their creativity and update our knowledge and practice to enhance the student experience and improve our institutional performance.

What leaders do:

CREATIVE - Challenge the status quo & encourage others to do the same.

CURIIOUS - Create a safe environment where teams can share new ideas.

SOLUTIONS FINDERS - Enable others to make improvements.



COLLABORATIVE

We work together as a community with our partners and build lasting relationships to achieve our shared ambition.

What leaders do:

ACCOUNTABLE - Explain the why behind decisions & own the outcome.

COMMITTED - Make regular contact with their team to share information & listen & include others in decision-making & tasks.

RELATIONSHIP BUILDERS - Make space for real collaboration to happen, within or outside the University, bringing the right people together



EXCELLENT

We strive for EXCELLENCE in all that we do in teaching, learning, research and knowledge exchange, as well as in the services we provide to students and to each other. To enable us to be excellent, we seek to act in ways that are INCLUSIVE, INSPIRING, INNOVATIVE & COLLABORATIVE.





University of Sunderland

Role profile

Job title:

Professor of Professional Practice (Learning and Teaching)

Department:

Faculty of Business and Technology

Location:

Sunderland campuses

Reports to:

Academic Pro Vice-Chancellor

Working hours:

37 hours per week



The role:

As Professor (Learning and Teaching) you will make significant contribution to the aims of the University, as presented in the University Strategic Plan, through the enhancement of the University's public reputation as a centre for academic excellence. You will undertake a full and active role in the life of the University, enhancing its public reputation as a centre of research, enterprise and innovation and learning and teaching, providing sustained academic leadership through the close co-operation with academic colleagues both internal and external.

The responsibilities:

- Lead applications for and securing income from such bodies as UKRI, charitable and scientific foundations, commercial enterprises, government and other sponsors.
- Provide sustained academic leadership together with close cooperation with academic colleagues both internal and external to the University.
- Support colleagues in the University to develop their pedagogic and scholarly activity through such means as mentoring, producing joint publications and the collaborative development of projects.
- Supervise postgraduate research students.
- Undertake activities indicative of professional esteem e.g. chairing external networks, journal editing, peer review activities or presenting keynote talks.
- Contribute to University, Faculty or School governance and/or academic development.
- Be included in the University's Expert Register and be available to represent the University and their area of expertise in the media and in other contexts.
- Represent the University on appropriate regionally and nationally recognised bodies.
- Contribute to the successful development of the University and its communities through institutional citizenship and participation in activities that promote academic success
- Deliver a public inaugural professorial lecture or appropriate equivalent public event (e.g. exhibition) on a topic of the role holder's choosing within one year of appointment.
- Teach undergraduate and postgraduate students to the highest professional standards.
- Perform such other duties as the Academic Dean or Deputy Vice-Chancellor (Academic) may from time to time determine.

The balance of activities will be discussed and reviewed on an annual basis in consultation with the individual and the relevant line manager, with the resulting profile approved by the Dean of Faculty or nominee.

The benefits:

At The University of Sunderland, we are committed to creating a work environment where you can truly thrive. We recognise that our success is built on the dedication and talent of our people, which is why we have developed a benefits package designed to support you in every aspect of your life.

From generous annual leave and enhanced pay for important life events like maternity, paternity, or adoption, to flexible work options that help you balance life's demands, we've got you covered. Our benefits also include access to our award-winning staff support networks, confidential employee assistance, discounts on major retail brands, leisure activities, travel to work, and more.

At Sunderland, we're not just offering a job, we're offering a place where you can grow, connect, and feel truly valued.

Who we're looking for

Your qualifications include:

- A postgraduate research qualification in a relevant field.
- A proven record of significant contribution to the aims of the University as presented in the University Strategic Plan and a demonstrable ability to enhance the University's public reputation for teaching excellence.
- A Doctorate in a relevant field or close to completion.
- Active membership of professional relevant bodies.

Significant measurable achievements in the following criteria:

- Made outstanding contributions to the development of student learning experiences and pedagogic practice, whether by the design or deliver of programmes.

Your experience includes:

Learning and Teaching Leadership

- A sustained track record of outstanding teaching, informed by disciplinary expertise and pedagogical innovation.
- A sustained track record of successfully leading colleagues in pedagogic enhancement and/or curriculum development activities with impact on the student experience and outcomes.
- Effective design, management and delivery of a learning and teaching project beyond immediate subject-based teaching.
- A significant contribution to teaching and learning at a national or international level through activities such as membership of editorial boards, active participation in higher education groups, dissemination or quality enhancement.
- Successful knowledge transfer to taught programmes and student learning from external engagement.
- Success in securing external funding for projects that enhance learning, teaching and/or the student experience.

- Proven record of successful doctoral supervisions and completions (*desirable*).
- Successful development of, and recruitment to, a new taught programme (*desirable*).

Professional Esteem

- National and international recognition demonstrated through publication and/or other dissemination activities and outputs.
- Raising the profile of the University through significant public or media events.
- A sustained record of productive involvement in translating pedagogic research into beneficial activity or positive change in the wider community.

- A sustained track record of peer-reviewed pedagogical research from either a higher education or disciplinary perspective (*desirable*).
- Collaborating with external partners in the development and delivery of learning and teaching projects (*desirable*).

What we're looking for

Your expertise includes:

- Nurtures and mentors skilled academics, supporting their professional growth and creating opportunities for others.
- Stimulates new knowledge, considers multiple perspectives and challenges traditional viewpoints.
- Inspires global academic communities, serving as an international authority and thought leader in the field.
- Applies advanced analytical methods across disciplines and designs projects that challenge conventional thinking to stimulate critical discourse.
- Develops robust evaluation processes to assess the progress, impact, and outcomes of major initiatives, influencing national and international agendas.
- Provides breakthrough thinking, anticipates emerging challenges, and takes strategic intellectual risks to pioneer new research directions.
- Builds influential connections across academic and non-academic sectors, championing interdisciplinary and cross-sector collaborations with global impact.
- Leads teaching programmes, integrates research into teaching, and fosters a culture that links academic inquiry with practical learning.
- Shapes policy and procedures in research and higher education, driving improvements in academic standards and practices.
- Promotes the reputation of the discipline and institution while advancing societal impact through academic and non-academic contributions.



Culture Framework:

Our [Culture Framework](#) presents the way we do things at the University of Sunderland. It is a living document of our culture. It supports how we apply ourselves at work and it helps with our approach to making decisions and working with each other. It is woven into all our people policies and procedures, supporting how colleagues are managed, recognised, and developed. Our values are our shared principles as an institution. We undertake actions to make them come to life. If you decide that a career with us is perfect for you, then these principles will lead and motivate your work every single day.

INCLUSIVE

We celebrate our diverse culture where everyone's contribution is welcomed and valued.

What leaders do:

RESPECTFUL - Create team environments where it feels safe to ask questions, share views, & challenge non-inclusive situations.

AUTHENTIC - Are consistent & transparent with how colleagues are led & motivated.

DIVERSITY CHAMPIONS - Ensure a diverse range of people are involved with making decisions or generating ideas.



INSPIRING

We will provide an inspiring, enterprising, and empowering experience for our students and staff.

What leaders do:

ENTHUSIASTIC - Bring clarity on the vision/purpose of the University & translate that message so teams understand their contribution.

ENCOURAGING - Trust & empower others to grow, giving praise and constructive feedback.

LIFE-LONG LEARNERS - Support others to develop, working with them to seek opportunities to learn.



INNOVATIVE

We value people for their creativity and update our knowledge and practice to enhance the student experience and improve our institutional performance.

What leaders do:

CREATIVE - Challenge the status quo & encourage others to do the same.

CURIIOUS - Create a safe environment where teams can share new ideas.

SOLUTIONS FINDERS - Enable others to make improvements.



COLLABORATIVE

We work together as a community with our partners and build lasting relationships to achieve our shared ambition.

What leaders do:

ACCOUNTABLE - Explain the why behind decisions & own the outcome.

COMMITTED - Make regular contact with their team to share information & listen & include others in decision-making & tasks.

RELATIONSHIP BUILDERS - Make space for real collaboration to happen, within or outside the University, bringing the right people together



EXCELLENT

We strive for EXCELLENCE in all that we do in teaching, learning, research and knowledge exchange, as well as in the services we provide to students and to each other. To enable us to be excellent, we seek to act in ways that are INCLUSIVE, INSPIRING, INNOVATIVE & COLLABORATIVE.





University of Sunderland

Role profile

Job title:

Associate Professor (Research)

Department:

Faculty of Business & Technology

Location:

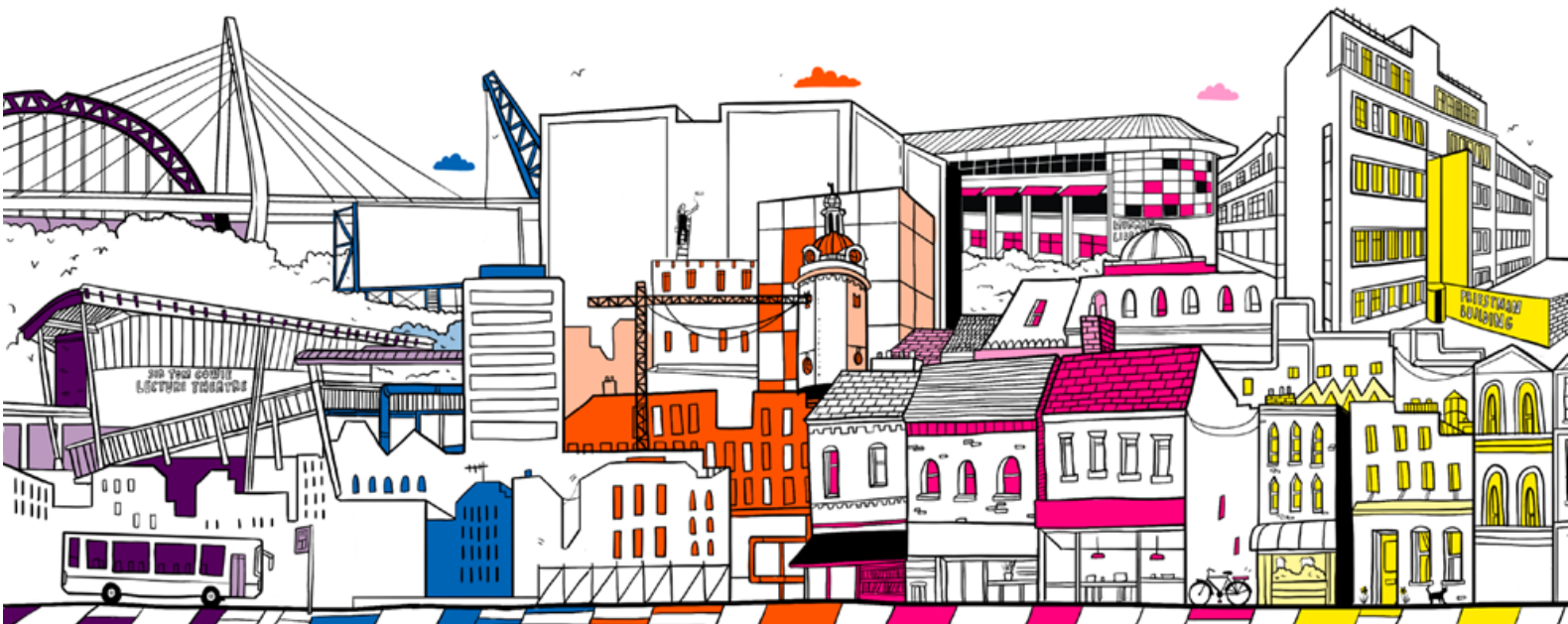
Sunderland campuses

Reports to:

Team Leader / Head of School

Working hours:

37



The role:

As Associate Professor (insert designation) you will make a substantial contribution to the aims of the University, as presented in the University Strategic Plan, through the enhancement of the University's public reputation as a centre for academic excellence. You will undertake a full and active role in the life of the University, enhancing its public reputation as a centre of research, enterprise and innovation and learning and teaching, providing effective academic leadership through the close co-operation with academic colleagues both internal and external.

The responsibilities:

- Produce high-quality research output for the Research Excellence Framework (REF), with at least one international-quality output annually and five over a REF period.
- Lead or contribute to research projects demonstrating REF impact and support applications for research income from councils, foundations, commercial enterprises, government, and other sponsors.
- Provide or support academic leadership through collaboration with internal and external colleagues, offering subject expertise and joint publications to advance research and education.
- Supervise postgraduate research students and engage in professional esteem activities such as chairing networks, journal editing, peer reviews, or delivering keynote talks.
- Contribute to governance and research strategy development by defining objectives and questions at University, Faculty, or School levels.
- Be listed in the University's Expert Register and represent the institution and expertise in media or other contexts, as well as on regional and national bodies.
- Foster institutional success through citizenship and participation in activities promoting academic achievement.
- Teach undergraduate and postgraduate students to the highest professional standards.
- Perform duties as determined by the Academic Dean or Deputy Vice-Chancellor (Academic).

The benefits:

At The University of Sunderland, we are committed to creating a work environment where you can truly thrive. We recognise that our success is built on the dedication and talent of our people, which is why we have developed a benefits package designed to support you in every aspect of your life.

From generous annual leave and enhanced pay for important life events like maternity, paternity, or adoption, to flexible work options that help you balance life's demands, we've got you covered. Our benefits also include access to our award-winning staff support networks, confidential employee assistance, discounts on major retail brands, leisure activities, travel to work, and more.

At Sunderland, we're not just offering a job, we're offering a place where you can grow, connect, and feel truly valued.

Who we're looking for

Your qualifications include:

- A postgraduate research qualification in a relevant field.
- A proven record of significant contribution to the aims of the University as presented in the University Strategic Plan and a demonstrable ability to enhance the University's public reputation as a centre for research.

Significant measurable achievements in the following criteria:

- A recognised academic scholar, making significant contributions to the furtherance of knowledge and its application to society through appropriate forms of dissemination and engagement.

Your experience includes:

Research Activity and Leadership

- A track record of peer-reviewed publications (and/or other forms of public output) of international quality.
- Effective contribution to a research unit or research team.
- Successful contribution to the delivery of individual or group research projects.
- Track record of achieving external funding from bodies such as government, third sector foundations or industry.
- Track record of doctoral supervision.

Research Environment and Impact

- Active engagement in consultancy and/or community activities.
- Contributed to the organisation of research conferences, symposia or other public events related to research.

Professional Esteem

- Refereeing for funding agencies, conferences, journals or learned bodies.
- Invited presentations at national and international conferences or other events.
- Representation of the University externally.

Desirable (Generic)

- Instigated research networks and other collaborative activities, including with external partners.
- Introducing scholarship in a new research area, involving colleagues and/or external partners.
- Contribution to PGR student developmental opportunities, within the Faculty and/or across the University.
- Experience as an editor for national/international journals.
- Active membership of a relevant professional body.
- Contribution to the national/international research environment, policy landscape and/or practice.



What we're looking for

Your expertise includes:

- Stimulates new knowledge, integrates multiple perspectives, and drives innovative research agendas while ensuring the integrity and vibrancy of the discipline.
- Nurtures skilled researchers and academics through mentorship, fostering their growth and creating Applies advanced analytical methods, fosters critical thinking across disciplines, and designs projects that challenge established norms and advance research themes.
- Anticipates cutting-edge questions, connects previously unrelated issues, and delivers groundbreaking research while inspiring intellectual curiosity.
- Builds global connections, serves as an internationally recognized authority, and champions the reputation of the discipline and institution.
- Shapes institutional and disciplinary policies, promotes high standards of conduct, and drives initiatives that support academic and non-academic well-being.
- Leads research-informed teaching, links research with educational practices, and mentors postgraduate supervisors to enhance academic impact.
- Develops robust evaluation processes to assess research progress, outcomes, and societal impact at national and international levels.
- Drives innovative ideas, challenges traditional viewpoints, and pioneers research projects that push the boundaries of knowledge.



Culture Framework:

Our [Culture Framework](#) presents the way we do things at the University of Sunderland. It is a living document of our culture. It supports how we apply ourselves at work and it helps with our approach to making decisions and working with each other. It is woven into all our people policies and procedures, supporting how colleagues are managed, recognised, and developed. Our values are our shared principles as an institution. We undertake actions to make them come to life. If you decide that a career with us is perfect for you, then these principles will lead and motivate your work every single day.

INCLUSIVE

We celebrate our diverse culture where everyone's contribution is welcomed and valued.

What leaders do:

RESPECTFUL - Create team environments where it feels safe to ask questions, share views, & challenge non-inclusive situations.

AUTHENTIC - Are consistent & transparent with how colleagues are led & motivated.

DIVERSITY CHAMPIONS - Ensure a diverse range of people are involved with making decisions or generating ideas.



INSPIRING

We will provide an inspiring, enterprising, and empowering experience for our students and staff.

What leaders do:

ENTHUSIASTIC - Bring clarity on the vision/purpose of the University & translate that message so teams understand their contribution.

ENCOURAGING - Trust & empower others to grow, giving praise and constructive feedback.

LIFE-LONG LEARNERS - Support others to develop, working with them to seek opportunities to learn.



INNOVATIVE

We value people for their creativity and update our knowledge and practice to enhance the student experience and improve our institutional performance.

What leaders do:

CREATIVE - Challenge the status quo & encourage others to do the same.

CURIOUS - Create a safe environment where teams can share new ideas.

SOLUTIONS FINDERS - Enable others to make improvements.



COLLABORATIVE

We work together as a community with our partners and build lasting relationships to achieve our shared ambition.

What leaders do:

ACCOUNTABLE - Explain the why behind decisions & own the outcome.

COMMITTED - Make regular contact with their team to share information & listen & include others in decision-making & tasks.

RELATIONSHIP BUILDERS - Make space for real collaboration to happen, within or outside the University, bringing the right people together



EXCELLENT

We strive for EXCELLENCE in all that we do in teaching, learning, research and knowledge exchange, as well as in the services we provide to students and to each other. To enable us to be excellent, we seek to act in ways that are INCLUSIVE, INSPIRING, INNOVATIVE & COLLABORATIVE.





University of Sunderland

Role profile

Job title:

Professor (Research)

Department:

Faculty of Business and Technology

Location:

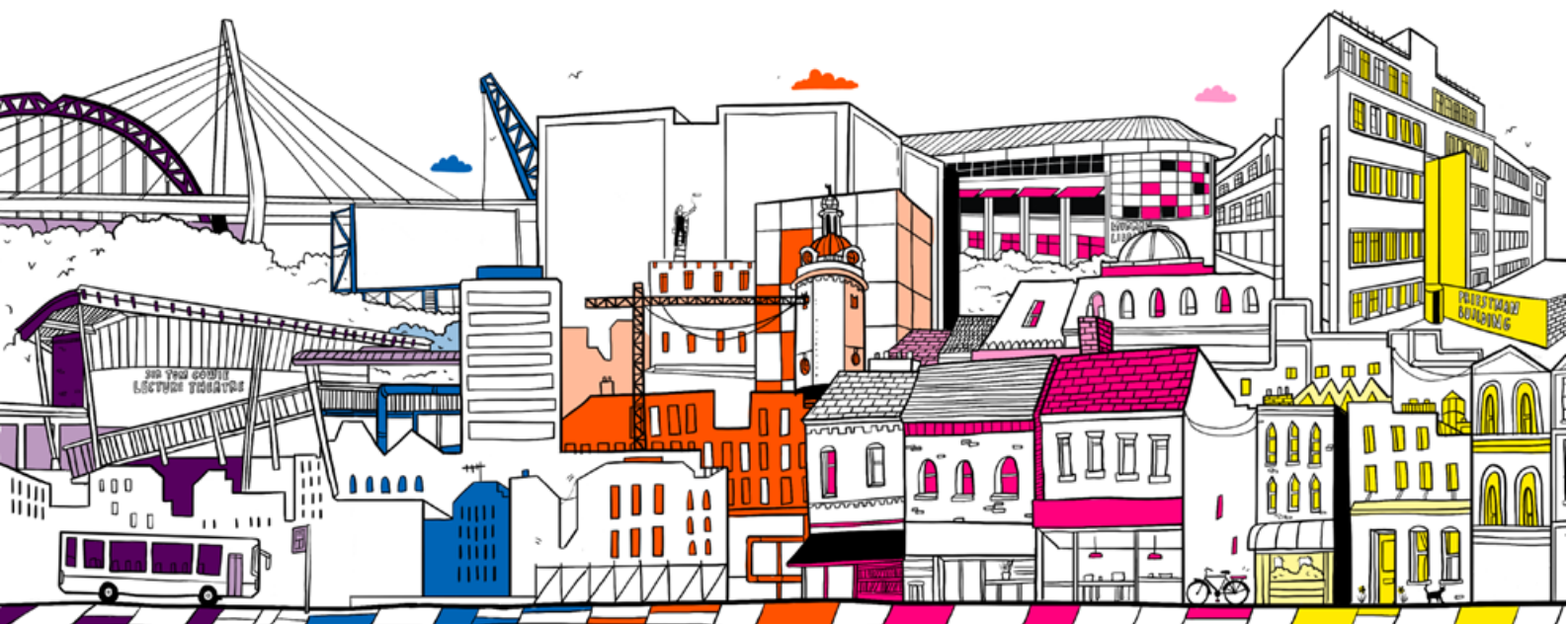
Sunderland campuses

Reports to:

Academic Dean

Working hours:

37



The role:

As Professor (insert designation) you will make significant contribution to the aims of the University, as presented in the University Strategic Plan, through the enhancement of the University's public reputation as a centre for academic excellence. You will undertake a full and active role in the life of the University, enhancing its public reputation as a centre of research, enterprise and innovation and learning and teaching, providing sustained academic leadership through the close co-operation with academic colleagues both internal and external.

The responsibilities:

- Produce high-quality research output for the Research Excellence Framework (REF), with at least one international quality output per academic year and five over a REF period.
- Lead research projects demonstrating REF Impact and secure research income from sources such as research councils, charitable foundations, commercial enterprises, government, and other sponsors.
- Provide sustained academic leadership through collaboration with internal and external academic colleagues.
- Support colleagues in developing their research through mentoring, joint publications, and collaborative research development.
- Supervise postgraduate research students.
- Undertake professional esteem activities, such as chairing external networks, journal editing, peer review, or delivering keynote talks.
- Contribute to governance and research development within the University, Faculty, or School.
- Be listed in the University's Expert Register and represent the University in media and other contexts.
- Represent the University on regionally and nationally recognized bodies.
- Contribute to the development of the University and its communities through institutional citizenship and activities that promote academic success.
- Deliver a public inaugural professorial lecture or equivalent public event within one year of appointment.
- Teach undergraduate and postgraduate students to the highest professional standards.
- Perform other duties as assigned by the Academic Dean or Deputy Vice-Chancellor (Academic).

The balance of activities will be discussed and reviewed on an annual basis in consultation with the individual and the relevant line manager, with the resulting profile approved by the Dean of Faculty or nominee.

The benefits:

At The University of Sunderland, we are committed to creating a work environment where you can truly thrive. We recognise that our success is built on the dedication and talent of our people, which is why we have developed a benefits package designed to support you in every aspect of your life.

From generous annual leave and enhanced pay for important life events like maternity, paternity, or adoption, to flexible work options that help you balance life's demands, we've got you covered. Our benefits also include access to our award-winning staff support networks, confidential employee assistance, discounts on major retail brands, leisure activities, travel to work, and more.

At Sunderland, we're not just offering a job, we're offering a place where you can grow, connect, and feel truly valued.

Who we're looking for

Your qualifications include:

- A postgraduate research qualification in a relevant field
- A proven record of significant contribution to the aims of the University as presented in the University Strategic Plan and a demonstrable ability to enhance the University's public reputation as a centre for research.

Significant measurable achievements in the following criteria:

- A high level internationally recognised academic scholar, making outstanding contributions to the furtherance of knowledge and its application to society through appropriate forms of dissemination and engagement.

Your experience includes:

Research activity and leadership

- A track record of peer-reviewed publications (and/or other forms of public output) of international excellence.
- Taken a leading role in Faculty Research Institute or a sub-group and successfully led or contributed to a research unit, team or project.
- Contributed to research projects with successful outcomes and financial control.
- Designed and collaborated on successful external funding bids from bodies such as government, third sector foundations or industry.
- Proven record of successful doctoral supervision.

Research Environment and Impact

- Contributed to the support, development and promotion of relationships with external organisations which could include an active engagement in consultancy and/or community activities or evidence of developing knowledge transfer and the commercialisation of research outcomes.
- Contributed to the convening and organisation of research conferences, symposia or other public events related to research.
- A track record of integration of subject-based research into the taught curriculum.

Professional Esteem

- Experience of refereeing for funding agencies, conferences, journals or learned bodies
- Evidence of delivery of presentations at national and international conferences or other events

Desirable (Generic)

- Instigated and/or lead research networks and other collaborative activities, including with external partners.
- Introduced scholarship in a new research area, involving colleagues and/or external partners
- Contribution to PGR student developmental opportunities, within the Faculty and/or across the University
- Lead or contributed to the national/international research environment, policy landscape and/or practice
- Experience as an editor for national/international journals
- Membership of relevant bodies in areas of work/research

What we're looking for

Your expertise includes:

- Stimulating new knowledge, fostering interdisciplinary collaboration and alternative research paradigms.
- Creating and employing relevant research methodologies, contributing to the integrity and vibrancy of the research area.
- Ability to mentor and develop skilled researchers, nurturing talent and inspiring international research communities.
- Analytical abilities and critical thinking across disciplines, advancing research and challenging traditional thinking.
- Leading research agendas with major contributions, evaluating progress, impact, and outcomes for national/international organizations.
- Fosters creativity, insight, and innovation, pioneering breakthrough thinking and challenging traditional viewpoints.
- Shapes policy and good practice in research, influencing the HE sector and professional associations.
- Champions the reputation of the discipline and institution, building influential connections and impacting society.
- Leads research-informed teaching and mentorship programs, promoting a culture that links research and teaching.



Culture Framework:

Our [Culture Framework](#) presents the way we do things at the University of Sunderland. It is a living document of our culture. It supports how we apply ourselves at work and it helps with our approach to making decisions and working with each other. It is woven into all our people policies and procedures, supporting how colleagues are managed, recognised, and developed. Our values are our shared principles as an institution. We undertake actions to make them come to life. If you decide that a career with us is perfect for you, then these principles will lead and motivate your work every single day.

INCLUSIVE

We celebrate our diverse culture where everyone's contribution is welcomed and valued.

What leaders do:

RESPECTFUL - Create team environments where it feels safe to ask questions, share views, & challenge non-inclusive situations.

AUTHENTIC - Are consistent & transparent with how colleagues are led & motivated.

DIVERSITY CHAMPIONS - Ensure a diverse range of people are involved with making decisions or generating ideas.



INSPIRING

We will provide an inspiring, enterprising, and empowering experience for our students and staff.

What leaders do:

ENTHUSIASTIC - Bring clarity on the vision/purpose of the University & translate that message so teams understand their contribution.

ENCOURAGING - Trust & empower others to grow, giving praise and constructive feedback.

LIFE-LONG LEARNERS - Support others to develop, working with them to seek opportunities to learn.



INNOVATIVE

We value people for their creativity and update our knowledge and practice to enhance the student experience and improve our institutional performance.

What leaders do:

CREATIVE - Challenge the status quo & encourage others to do the same.

CURIIOUS - Create a safe environment where teams can share new ideas.

SOLUTIONS FINDERS - Enable others to make improvements.



COLLABORATIVE

We work together as a community with our partners and build lasting relationships to achieve our shared ambition.

What leaders do:

ACCOUNTABLE - Explain the why behind decisions & own the outcome.

COMMITTED - Make regular contact with their team to share information & listen & include others in decision-making & tasks.

RELATIONSHIP BUILDERS - Make space for real collaboration to happen, within or outside the University, bringing the right people together



EXCELLENT

We strive for EXCELLENCE in all that we do in teaching, learning, research and knowledge exchange, as well as in the services we provide to students and to each other. To enable us to be excellent, we seek to act in ways that are INCLUSIVE, INSPIRING, INNOVATIVE & COLLABORATIVE.





University of Sunderland

Role profile

Job title:

Associate Professor (Enterprise and Innovation)

Department:

Faculty of Business and Technology

Location:

Sunderland campuses

Reports to:

Team Leader / Head of Academic Department

Working hours:

37



The role:

As Associate Professor (insert designation) you will make a substantial contribution to the aims of the University, as presented in the University Strategic Plan, through the enhancement of the University's public reputation as a centre for academic excellence. You will undertake a full and active role in the life of the University, enhancing its public reputation as a centre of research, enterprise and innovation and learning and teaching, providing effective academic leadership through the close co-operation with academic colleagues both internal and external.

The responsibilities:

- Secure funding from bodies such as UKRI, charitable foundations, commercial enterprises, government, and other sponsors.
- Provide academic leadership by collaborating with colleagues within and beyond the University.
- Support colleagues' academic development through joint projects and expert advice.
- Supervise postgraduate research students.
- Demonstrate professional esteem through activities like chairing networks, journal editing, peer review, or keynote presentations.
- Contribute to University, Faculty, or school governance and academic development.
- Represent the University and expertise area in the media and on regionally or nationally recognized bodies.
- Support the University's development through institutional citizenship and promoting academic success.
- Deliver high-standard teaching to undergraduate and postgraduate students.
- Undertake additional duties as directed by the Academic Dean or Deputy Vice-Chancellor (Academic).

The benefits:

At The University of Sunderland, we are committed to creating a work environment where you can truly thrive. We recognise that our success is built on the dedication and talent of our people, which is why we have developed a benefits package designed to support you in every aspect of your life.

From generous annual leave and enhanced pay for important life events like maternity, paternity, or adoption, to flexible work options that help you balance life's demands, we've got you covered. Our benefits also include access to our award-winning staff support networks, confidential employee assistance, discounts on major retail brands, leisure activities, travel to work, and more.

At Sunderland, we're not just offering a job, we're offering a place where you can grow, connect, and feel truly valued. Welcome to a community that rewards your contributions.

Who we're looking for

Your qualifications include:

- An honours degree in a related discipline
- A proven record of significant contribution to the aims of the University as presented in the University Strategic Plan and a demonstrable ability to enhance the University's public reputation as a centre for teaching excellence.

Significant measurable achievements in the following criteria:

- Proponent of reach-out activities, by making a substantial contribution to support, develop and promote knowledge transfer, enterprise and employer related learning; maximising funding opportunities and developing and maintaining partnerships with substantial, measurable benefits to the organisations.

Your experience includes:

Enterprise and Innovation Leadership

- Success in developing applied research, enterprise and/or innovation projects, which may include KTPs, CPD programmes, events and conferences.
- Evidence of successfully leading colleagues in enterprise or innovation development activities with impact on research and income generation.
- Developing enterprise-led learning or other professional activities in the taught curriculum.
- Collaborating with external partners in the development and delivery of innovation projects.
- Evidence of securing external funding from bodies such as government, third sector foundations or commerce and/or through consultancy contracts.
- Evidence of impact on industrial, public or third sector partners, achieving change in products, practices, performance, organisational capability and/or capacity

Professional Esteem

- National recognition demonstrated through publication and/or other dissemination activities and outputs.
- Professional good standing evidenced through awards or other recognition of practice.
- External recognition through active membership of professional bodies and/or undertaking advisory roles for national or international agencies and networks.
- A role in regional working groups or advisory boards.
- Raising the profile of the University through significant public events and/or the media.

Desirable (Generic)

- A Doctorate in a relevant field
- Proven record of successful doctoral supervisions and completions
- Design and successful delivery of professional training and staff development programmes for external clients.
- Developing successful partnerships with public sector or third sector bodies.
- Developing social enterprise and community engagement activities.
- Membership of relevant bodies in areas of work/research

What we're looking for

Your expertise includes:

- Stimulates new knowledge and integrates multiple perspectives to advance academic disciplines and research areas.
- Inspires international academic communities, mentors skilled academics, and serves as a role model for fostering talent development.
- Applies understanding across disciplines and research areas, advancing agendas within and beyond academia.
- Designs groundbreaking projects, challenges traditional paradigms, and evaluates progress and impact on global issues.
- Leads transformative research agendas, develops innovative methodologies, and contributes to the integrity and vibrancy of research areas.
- Anticipates cutting-edge questions, pioneers intellectual breakthroughs, and challenges conventional viewpoints with strategic insight.
- Guides postgraduate researchers and early-career academics, fostering professional growth and creating opportunities for success.
- Recognized authority in the field, advancing academic excellence and societal contributions on an international scale.
- Builds influential partnerships across disciplines and with non-academic organizations, promoting shared goals and autonomy.
- Integrates research into teaching, leads quality assurance in educational programs, and promotes a culture of linked research and education.



Culture Framework:

Our [Culture Framework](#) presents the way we do things at the University of Sunderland. It is a living document of our culture. It supports how we apply ourselves at work and it helps with our approach to making decisions and working with each other. It is woven into all our people policies and procedures, supporting how colleagues are managed, recognised, and developed. Our values are our shared principles as an institution. We undertake actions to make them come to life. If you decide that a career with us is perfect for you, then these principles will lead and motivate your work every single day.

INCLUSIVE

We celebrate our diverse culture where everyone's contribution is welcomed and valued.

What leaders do:

RESPECTFUL - Create team environments where it feels safe to ask questions, share views, & challenge non-inclusive situations.

AUTHENTIC - Are consistent & transparent with how colleagues are led & motivated.

DIVERSITY CHAMPIONS - Ensure a diverse range of people are involved with making decisions or generating ideas.



INSPIRING

We will provide an inspiring, enterprising, and empowering experience for our students and staff.

What leaders do:

ENTHUSIASTIC - Bring clarity on the vision/purpose of the University & translate that message so teams understand their contribution.

ENCOURAGING - Trust & empower others to grow, giving praise and constructive feedback.

LIFE-LONG LEARNERS - Support others to develop, working with them to seek opportunities to learn.



INNOVATIVE

We value people for their creativity and update our knowledge and practice to enhance the student experience and improve our institutional performance.

What leaders do:

CREATIVE - Challenge the status quo & encourage others to do the same.

CURIOUS - Create a safe environment where teams can share new ideas.

SOLUTIONS FINDERS - Enable others to make improvements.



COLLABORATIVE

We work together as a community with our partners and build lasting relationships to achieve our shared ambition.

What leaders do:

ACCOUNTABLE - Explain the why behind decisions & own the outcome.

COMMITTED - Make regular contact with their team to share information & listen & include others in decision-making & tasks.

RELATIONSHIP BUILDERS - Make space for real collaboration to happen, within or outside the University, bringing the right people together



EXCELLENT

We strive for EXCELLENCE in all that we do in teaching, learning, research and knowledge exchange, as well as in the services we provide to students and to each other. To enable us to be excellent, we seek to act in ways that are INCLUSIVE, INSPIRING, INNOVATIVE & COLLABORATIVE.





University of Sunderland

Role profile

Job title:

Professor of Professional Practice (Enterprise and Innovation)

Department:

Faculty of Business and Technology

Location:

Sunderland campuses

Reports to:

Academic Dean

Working hours:

37



The role:

As Professor (insert designation) you will make significant contribution to the aims of the University, as presented in the University Strategic Plan, through the enhancement of the University's public reputation for enterprise and innovation. You will undertake a full and active role in the life of the University, enhancing its public reputation as a centre of research, enterprise and innovation and learning and teaching, providing sustained academic leadership through the close co-operation with academic colleagues both internal and external.

The responsibilities:

- Lead applications for and securing income from such bodies as UKRI, charitable and scientific foundations, commercial enterprises, government and other sponsors.
- Provide sustained academic leadership together with close cooperation with academic colleagues both internal and external to the University.
- Support colleagues in the University to develop their pedagogic and scholarly activity through such means as mentoring, producing joint publications and the collaborative development of projects.
- Supervise postgraduate research students
- Undertake activities indicative of professional esteem e.g. chairing external networks, journal editing, peer review activities or presenting keynote talks.
- Contribute to University, Faculty or School governance and/or academic development.
- Be included in the University's Expert Register and be available to represent the University and their area of expertise in the media and in other contexts.
- Represent the University on appropriate regionally and nationally recognised bodies.
- Contribute to the successful development of the University and its communities through institutional citizenship and participation in activities that promote academic success
- Deliver a public inaugural professorial lecture or appropriate equivalent public event (e.g. exhibition) on a topic of the role holder's choosing within one year of appointment.
- Teach undergraduate and postgraduate students to the highest professional standards.
- Perform such other duties as the Academic Dean or Deputy Vice-Chancellor (Academic) may from time to time determine.

The balance of activities will be discussed and reviewed on an annual basis in consultation with the individual and the relevant line manager, with the resulting profile approved by the Dean of Faculty or nominee.

The benefits:

At The University of Sunderland, we are committed to creating a work environment where you can truly thrive. We recognise that our success is built on the dedication and talent of our people, which is why we have developed a benefits package designed to support you in every aspect of your life.

From generous annual leave and enhanced pay for important life events like maternity, paternity, or adoption, to flexible work options that help you balance life's demands, we've got you covered. Our benefits also include access to our award-winning staff support networks, confidential employee assistance, discounts on major retail brands, leisure activities, travel to work, and more.

At Sunderland, we're not just offering a job, we're offering a place where you can grow, connect, and feel truly valued.

Who we're looking for

Your qualifications include:

- A postgraduate research qualification in a relevant field
- A proven record of significant contribution to the aims of the University as presented in the University Strategic Plan and a demonstrable ability to enhance the University's public reputation for enterprise and innovation.

Significant measurable achievements in the following criteria:

- Proponent of reach-out activities, by making a significant contribution to support, develop and promote knowledge transfer, enterprise and employer related learning; maximising funding opportunities and developing and maintaining partnerships with significant, measurable benefits to the organisations.

-

Your experience includes:

Enterprise and Innovation Leadership

- Outstanding and sustained success in developing applied research, enterprise and/or innovation projects, which may include KTPs, CPD programmes, events and conferences.
- Lead colleagues successfully in enterprise activities including developing new innovation/enterprise groups.
- A leading role in a significant university-wide enterprise initiative including effective management and delivery of applied projects.
- Developing enterprise-led learning or other professional activities in the taught curriculum.
- Collaborating with external partners in the development and delivery of innovation projects.
- Sustained record of securing external funding from bodies such as government, third sector foundations or commerce and/or through significant consultancy contracts.
- Evidence of significant impact on industrial, public or third sector partners, achieving change in products, practices, performance, organisational capability and/or capacity.

Professional Esteem

- National and international recognition demonstrated through publication and/or other dissemination activities and outputs.
- Professional good standing evidenced through awards or other recognition of practice.
- External recognition through active membership of professional bodies and/or undertaking advisory roles for national or international agencies and networks.
- Leading role in regional working groups or advisory boards.
- Raising the profile of the University through significant public events and/or the media.

Desirable (Generic)

- A Doctorate in a relevant field
- Proven record of successful doctoral supervisions and completions
- Design and successful delivery of professional training and staff development programmes for external clients.
- Developing successful partnerships with public sector or third sector bodies.
- Developing and/or leading social enterprise and community engagement activities.
- Membership of relevant bodies in areas of work/research

What we're looking for

Your expertise includes:

- Nurtures talent through mentorship, developing skilled academics and creating opportunities for growth.
- Stimulates new knowledge by employing innovative research methodologies and considering diverse perspectives.
- Inspires global academic communities, serving as a recognized authority and thought leader on the international stage.
- Applies advanced analytical abilities across disciplines, fostering critical thinking at both academic and policy levels.
- Leads enterprise initiatives by making significant contributions to understanding and creating impactful innovations.
- Inspires curiosity, and pioneers breakthrough ideas that challenge traditional perspectives.
- Builds influential partnerships across academic and non-academic sectors, championing interdisciplinary collaboration with societal impact.
- Shapes policies and best practices in research and higher education, promoting well-being and inclusivity within academic communities.
- Leads teaching programmes, integrates research into teaching, and fosters a culture linking academic inquiry with educational practices.



Culture Framework:

Our [Culture Framework](#) presents the way we do things at the University of Sunderland. It is a living document of our culture. It supports how we apply ourselves at work and it helps with our approach to making decisions and working with each other.

It is woven into all our people policies and procedures, supporting how colleagues are managed, recognised, and developed. Our values are our shared principles as an institution. We undertake actions to make them come to life. If you decide that a career with us is perfect for you, then these principles will lead and motivate your work every single day.

INCLUSIVE

We celebrate our diverse culture where everyone's contribution is welcomed and valued.

What leaders do:

RESPECTFUL - Create team environments where it feels safe to ask questions, share views, & challenge non-inclusive situations.

AUTHENTIC - Are consistent & transparent with how colleagues are led & motivated.

DIVERSITY CHAMPIONS - Ensure a diverse range of people are involved with making decisions or generating ideas.



INSPIRING

We will provide an inspiring, enterprising, and empowering experience for our students and staff.

What leaders do:

ENTHUSIASTIC - Bring clarity on the vision/purpose of the University & translate that message so teams understand their contribution.

ENCOURAGING - Trust & empower others to grow, giving praise and constructive feedback.

LIFE-LONG LEARNERS - Support others to develop, working with them to seek opportunities to learn.



INNOVATIVE

We value people for their creativity and update our knowledge and practice to enhance the student experience and improve our institutional performance.

What leaders do:

CREATIVE - Challenge the status quo & encourage others to do the same.

CURIIOUS - Create a safe environment where teams can share new ideas.

SOLUTIONS FINDERS - Enable others to make improvements.



COLLABORATIVE

We work together as a community with our partners and build lasting relationships to achieve our shared ambition.

What leaders do:

ACCOUNTABLE - Explain the why behind decisions & own the outcome.

COMMITTED - Make regular contact with their team to share information & listen & include others in decision-making & tasks.

RELATIONSHIP BUILDERS - Make space for real collaboration to happen, within or outside the University, bringing the right people together



EXCELLENT

We strive for EXCELLENCE in all that we do in teaching, learning, research and knowledge exchange, as well as in the services we provide to students and to each other. To enable us to be excellent, we seek to act in ways that are INCLUSIVE, INSPIRING, INNOVATIVE & COLLABORATIVE.

